

ARMA
DENTAL

the better way





When all you need is everything; it is good to know there is one company that you can count on to deliver complete solutions and services. From Dental, Industry, Chemistry we develop better processes everyday - all backed by unrivaled customer service and support - we through our experience help you to raise game and increase your competitive edge.

ARMA
DENTAL

the better way

All Resins Dimensionally Tested By Cube Printings from Corner to Center Of Printing Area

First test is dimensional stability test. We put 9 cubes as shown at the left picture to the printing table. Most of the printers has a light intensity difference from center to corner by %9-%30. We measure all the printed results before & after post cure and see the standart deviation. Thanks to our technology we get 9-16 micron standart deviation from the printed results. One of the most famous resin's standart deviation is more than 26 micron.

All resins needs to work as fast as possible

We control our resins formulations' reaction speed when the resin exposure by UV light. We achieve this not adding more photo initiators to the resin. By the way there is no color change after days and weeks. For example; with a light intensity 7 mW/cm²; we are able work with 0,8-1,1 sec exposure times. A model which has around 300 layers (50 micron) can be printed in 19 minutes.

All resins needs to work by short separation distances not to loose much time

We develop our resins to work fast with all types of printers. To achieve that, we decrease the separation force of our resin from printing film. For example, one of the most famous printer brand works with its own resin by a 10 mm separation distance. We are able to work with 3.7 mm. It means %40-%50 less printing times.

All Resins Geometrically Tested By 3d Deformation Analysis

As a last testing; we make 3D deformation analysis with the original datas. Our model resins has below than 100 micron deformation for a full arch. This is a high level precision for the 3D printing market.

We Create our own formulations as to the process need

First we analyze the process and then start to develop formulations. We make our own synthesis for some of the indicators in our synthesis laboratory. Surface modifications are the key point to control the chemical bonds. We are professional regarding these critical points.

We make our in-house analysis and test as to the ISO standards

We measure all of our resins regarding the Elasticity modulus, flexural strength, tensile strength, hardness and elongation. Also water absorption tests, colour stability tests, phase separation tests are made in house from our analysis laboratory.

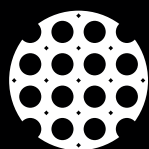






UNDER THE BACK LIGHT

Opalessance Effect. Esthetic like ceramic materials.



ArmaResin

This is just temp resin.

Wait for the ArmaResin Permanent.

Will be certified Q3 - 2023...

It will be again game changer...

Dental Model HP

*"Biocompatible resin for dental models.
Highly accurate and durable."*

Specialities

- Fast printing
- Perfect topographies
- Scratch Resistance
- Color Stability
- Excellent Endurance for Autoclave
- High Surface Hardness
- Carvable like gypsum
- High flexural strength
- Excellent Dimensional Stability
- Works with 385 / 405 nm
- Compatible with DLP / LCD
- Shape Stability After Curing

➤ *Eliminated Phase Separation During Storage / Long Shelf Life*

Mechanical Properties

Property	Procedure	Result
Flexural Strength	ISO 4049	118,88
Elasticity Modulus	ISO 4049	2047,05
Viscosity (m.Pa.s 23 OC)	—	470
Elongation at Break (mm)	ISO 4049	3,12

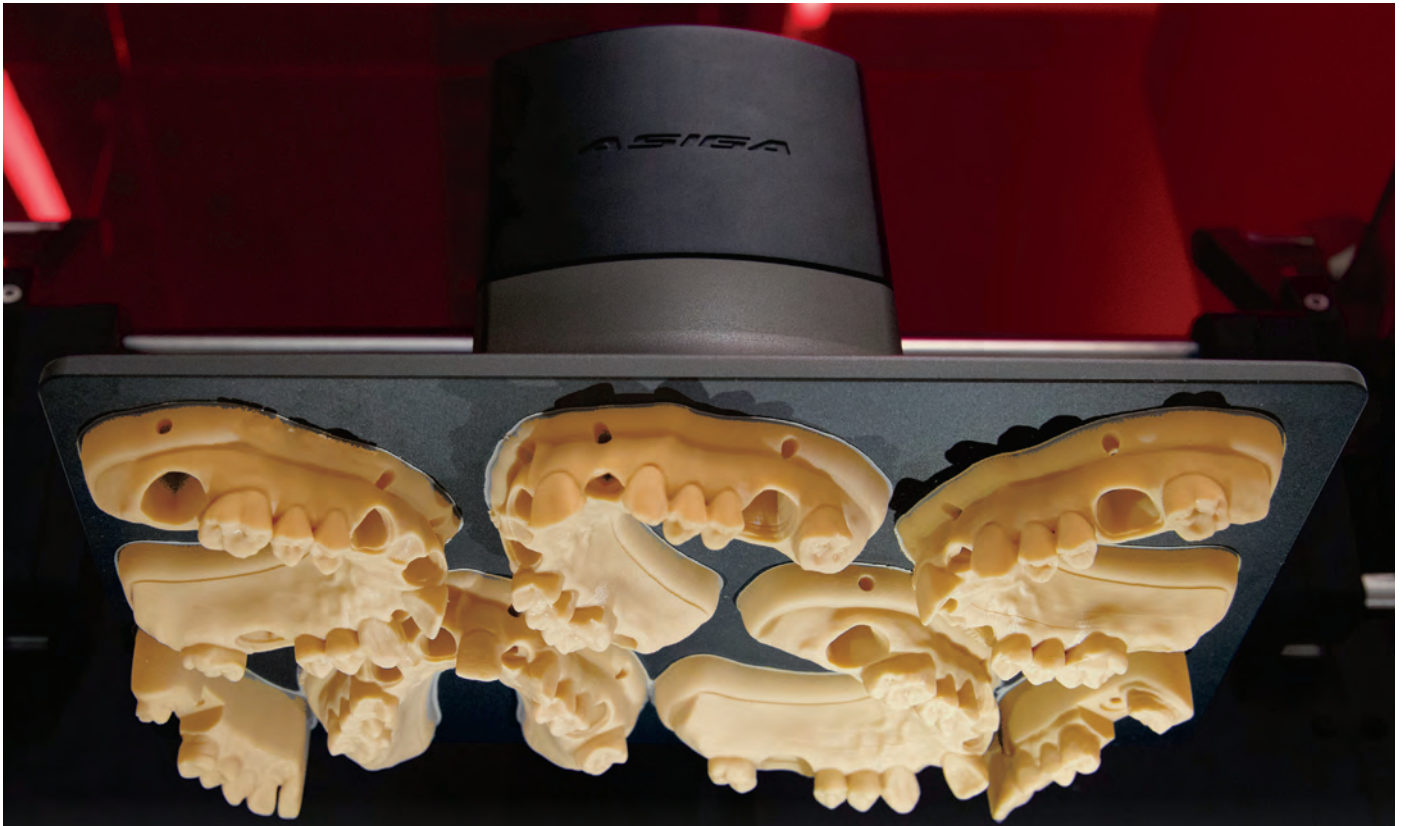
Colour Alternatives

- Standart Colour: Peach
- Alternative Colour: Gray

24
MONTHS Shelf Life

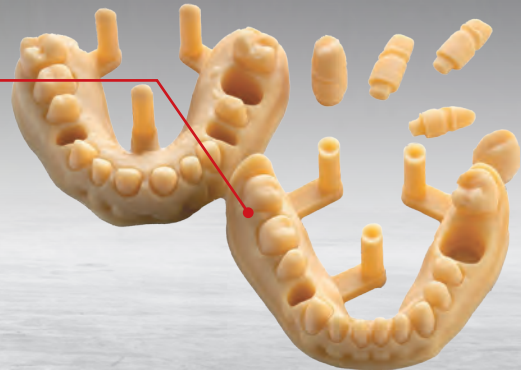
**Optimised polymerisation during UV penetration
Controlled Reaction Speed**





Model HP is more than a model resin. It has scratch resistance and carvable like gypsum

Uniquely for all die models and implant models; this resin does not show any deformation. You are sure about the precision



For long time; this resin is not effected by sunlight. Even after months

Dental Model ST

*"Biocompatible resin for dental models.
Highly accurate and cost effective."*

Specialities

- Ultra fast printing
- Perfect topographies
- Color Stability
- High Surface Hardness
- Excellent Endurance for Autoclave
- Excellent Dimensional Stability
- High flexural strength
- Works with 385 / 405 nm
- Compatible with DLP / LCD
- Shape Stability After Curing

➤ *Eliminated Phase Separation During Storage / Long Shelf Life*

Mechanical Properties

Property	Procedure	Result
Flexural Strength	ISO 4049	100,31
Elasticity Modulus	ISO 4049	2081,3
Viscosity (m.Pa.s 23 OC)	—	110
Elongation at Break (mm)	ISO 4049	1,95

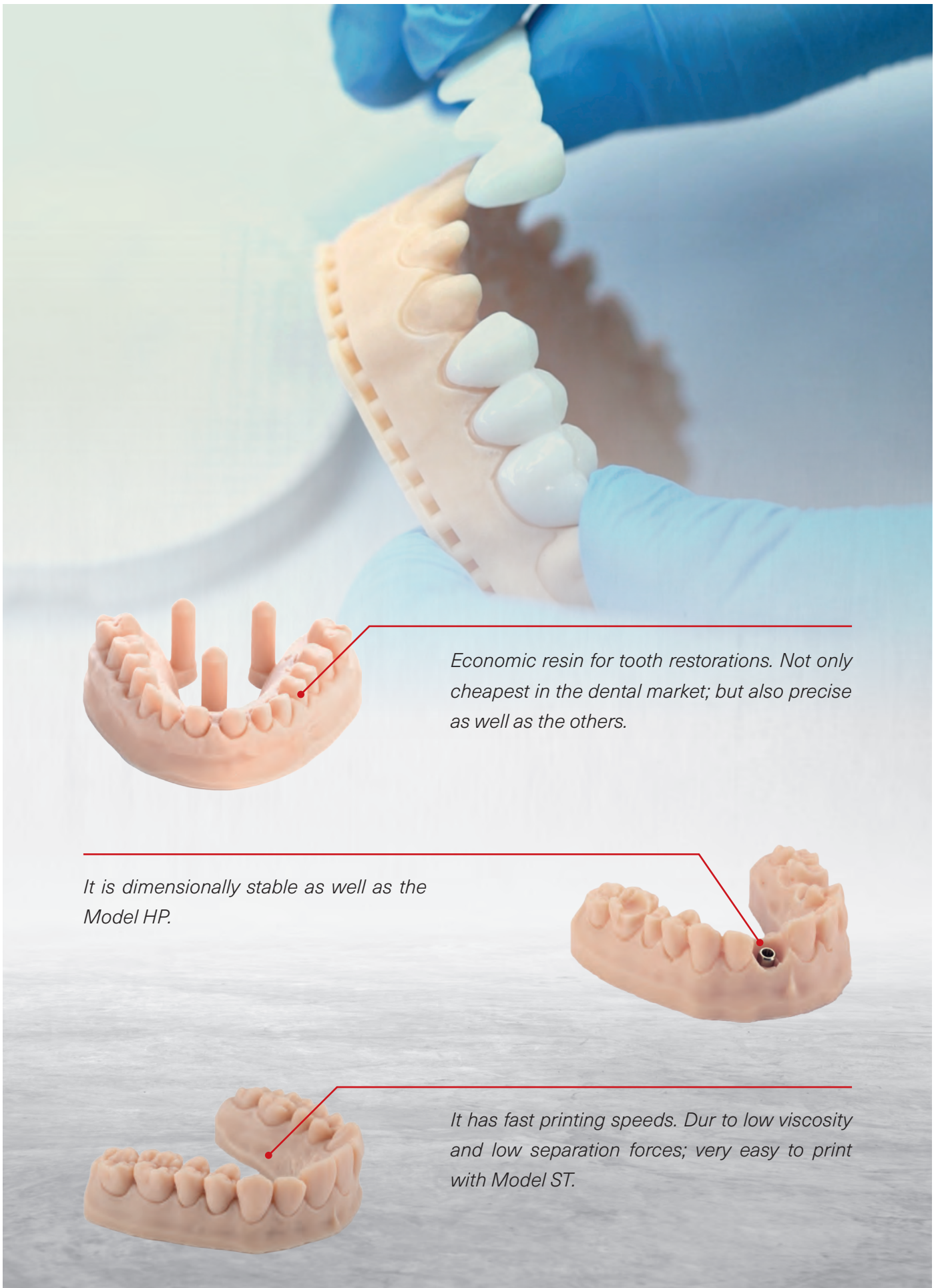
Colour Alternatives

- Standart Colour: Beige
- Alternative Colour: Gray

24
MONTHS Shelf Life

**Optimised polymerisation during UV penetration
Controlled Reaction Speed**





Economic resin for tooth restorations. Not only cheapest in the dental market; but also precise as well as the others.

It is dimensionally stable as well as the Model HP.

It has fast printing speeds. Dur to low viscosity and low separation forces; very easy to print with Model ST.

Temp Teeth

*"Biocompatible resin for temporaries.
Ultra high flexural strength.
Low water absorption and stable colors."*

Specialities

- Fast printing
- Perfect Details
- Color Stability
- Bio-compatible
- Easy Stain & Glaze
- Excellent Dimensional Stability
- Ultra high flexural strength
- Compatible with DLP / LCD
- Nearly no water absorption
- MMA free formula
- Easy to polish

➤ **Eliminated Phase Separation During Storage / Long Shelf Life**

Mechanical Properties

Property	Procedure	Result
Flexural Strength	ISO 10477	125,46
Elasticity Modulus	ISO 10477	2329,48
Viscosity (m.Pa.s 23 OC)	—	400
Elongation at Break (mm)	ISO 10477	3,7
Water Absorption (mg/mm3)	ISO 4049	0,078

Colour Alternatives

- A1-A2-A3-B1-BL-Bleach
- Other colors are on demand

24
MONTHS Shelf Life



Medical Product
Class I



On Progress



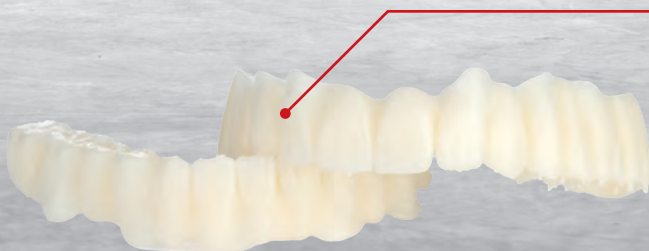
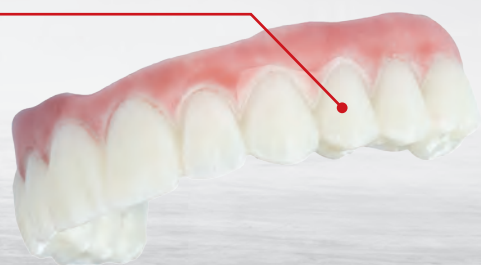
**Optimised polymerisation during UV penetration
Controlled Reaction Speed**





*Reasonable price but outstanding properties.
More than %95 correction for full arch without
any support*

*Stabil colors before & after post cure.
Ultra White - BL - B1 - A1 - A2 - A3 - A3,5
Opalessance Effect. Esthetic like glass ceramics*



A1 Colour After Post Cure

*More than a temp resin. 125 Mpa
flexural strength. Plus 4,5 mm
elongation at break (ISO 10477)*

Denture Base

*"Biocompatible resin for dentures.
Ultra high flexural strength,
low water absorption and stable colors."*

Specialities

- Fast printing
- Perfect Details
- Color Stability
- Bio-compatible
- Easy Stain & Glaze
- Excellent Dimensional Stability
- Ultra high flexural strength
- Compatible with DLP / LCD
- Nearly no water absorption
- MMA free formula
- Easy to polish

➤ **Eliminated Phase Separation During Storage / Long Shelf Life**

Mechanical Properties

Property	Procedure	Result
Flexural Strength	ISO 10477	125,46
Elasticity Modulus	ISO 10477	2329,48
Viscosity (m.Pa.s 23 0C)	—	400
Elongation at Break (mm)	ISO 10477	3,7
Water Absorption (mg/mm3)	ISO 4049	0,078

Colour Alternatives

- Original - Light
- Other colors are on demand

24
MONTHS Shelf Life



Medical Product
Class IIa
On Progress

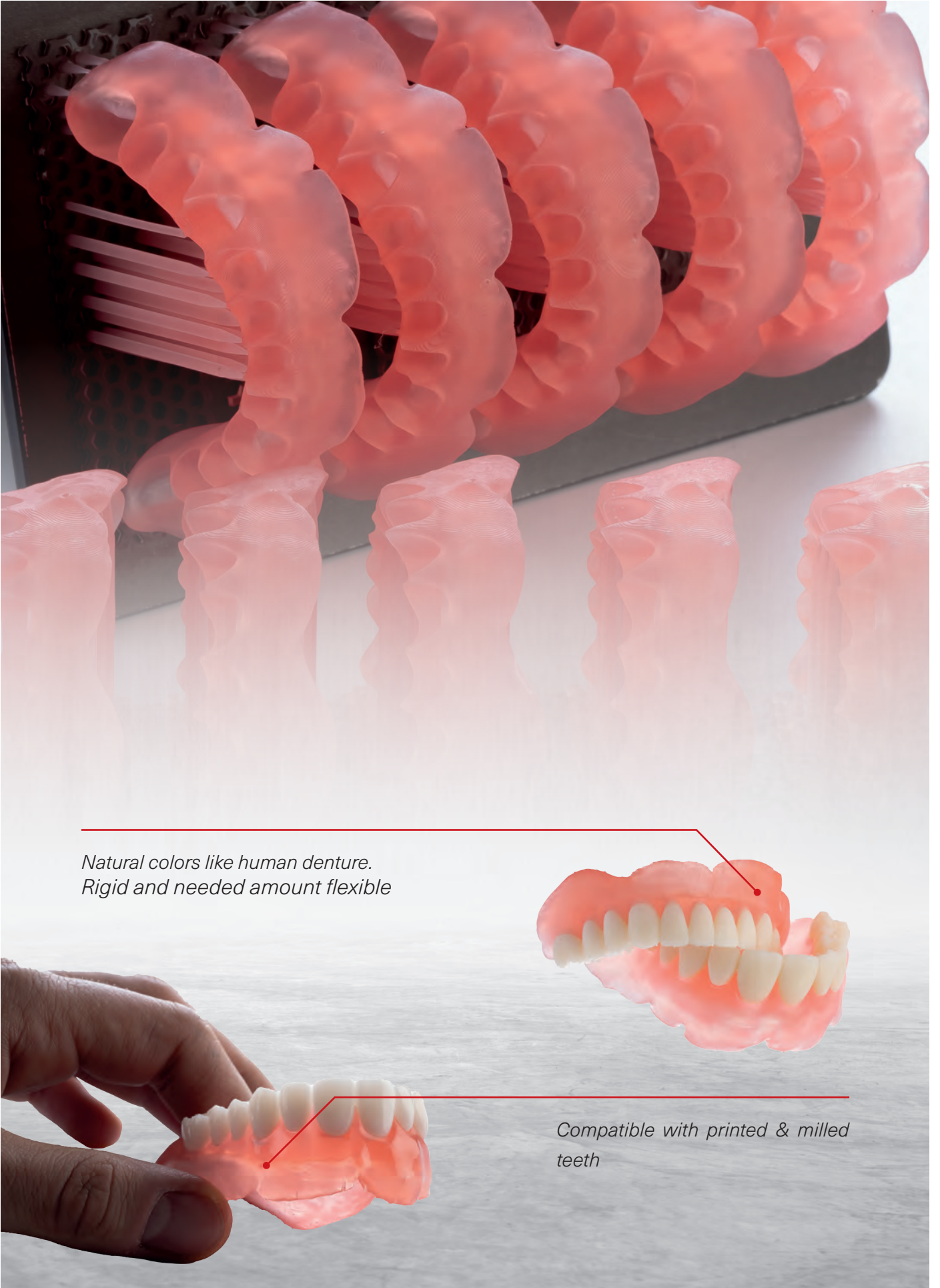


On Progress



**Optimised polymerisation during UV penetration
Controlled Reaction Speed**





*Natural colors like human denture.
Rigid and needed amount flexible*



*Compatible with printed & milled
teeth*

Dental Cast V1.0

*"Biocompatible resin for dental casting.
Cost effective and fast working."*

Specialities

- Ultra fast printing
- Perfect Details
- Fast Burning
- Low Shrinkage
- Residue Free
- Ensure Clasp Flex Without Breaking
- Excellent Dimensional Stability
- Low Thermal Expansion
- Optimized Depth of Cure
- Works with 385 / 405 nm
- No need for post curing
- Easy to work with investments
- Compatible with DLP / LCD

➤ *Eliminated Phase Separation During Storage / Long Shelf Life*

Mechanical Properties

Property	Procedure	Result
Flexural Strength	ISO 4049	33,89
Elasticity Modulus	ISO 4049	640,31
Viscosity (m.Pa.s 23 OC)	————	300
Elongation at Break (mm)	ISO 4049	7,11
Burnout	————	< % 0,05

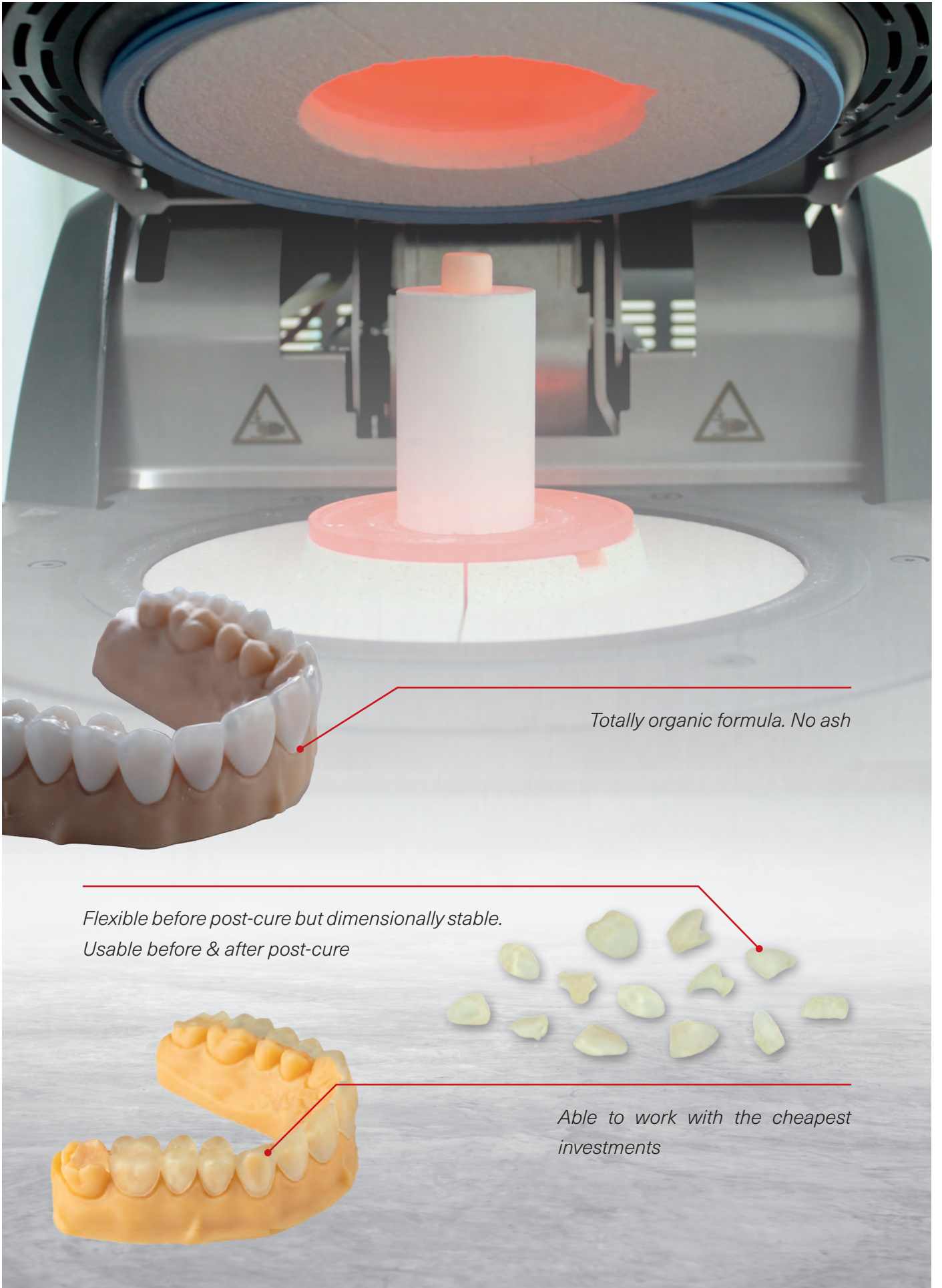
Colour Alternatives

- Standart Colour: Transperent Yellowish

24
MONTHS Shelf Life

**Optimised polymerisation during UV penetration
Controlled Reaction Speed**





Totally organic formula. No ash

*Flexible before post-cure but dimensionally stable.
Usable before & after post-cure*

*Able to work with the cheapest
investments*

Surgical Guide

*"Biocompatible resin for surgical guides.
Cost effective and highly precise"*

Specialities

- Ultra fast printing
- Easy to Polish.
- High precision
- Transparent to see drill position.
- Excellent Dimensional Stability
- Optimized Depth of Cure
- Works with 385 / 405 nm
- High Flexural Strength
- Compatible with DLP / LCD

➤ *Eliminated Phase Separation During Storage / Long Shelf Life*

Mechanical Properties

Property	Procedure	Result
Flexural Strength	ISO 4049	88,17
Elasticity Modulus	ISO 4049	1937,54
Viscosity (m.Pa.s 23 OC)	—	300
Elongation at Break (mm)	ISO 4049	1,71

Colour Alternatives

- Standart Colour: Transperent

24
MONTHS Shelf Life



Medical Product
Class IIa
On Progress



On Progress



Optimised polymerisation during UV penetration
Controlled Reaction Speed





Transparent look
Rigid material and robust during surgery



Dimensionally stable
No taste and neutral smell
Autoclavable

Splint

*"Biocompatible resin for occlusal splints.
High flexural strength,
No taste - Neutral Odour"*

Specialities

- Fast printing
- Perfect Details
- Color Stability
- Bio-compatible
- Easy Stain & Glaze
- Excellent Dimensional Stability
- High mechanical strength
- Compatible with DLP / LCD
- Low viscosity for easy cleaning
- No taste and neutral odour
- High bending strength

➤ **Eliminated Phase Separation During Storage / Long Shelf Life**

Mechanical Properties

Property	Procedure	Result
Flexural Strength	ISO 4049	90
Elasticity Modulus	ISO 4049	2329,48
Viscosity (m.Pa.s 23 OC)	—	400
Elongation at Break (mm)	ISO 4049	4,5

Colour Alternatives

- Original - Transperent
- Other colors are on demand

24
MONTHS Shelf Life



Medical Product
Class IIa
On Progress



On Progress

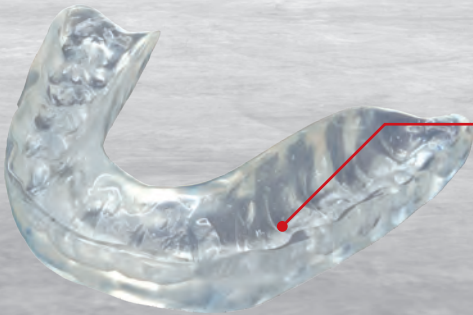


**Optimised polymerisation during UV penetration
Controlled Reaction Speed**





*Transparent look
No taste and neutral smell*



*Rigid for occlusion forces; flexible
to as hard splint needs to be*

Impression Tray

*"Biocompatible resin for customized trays.
Strong and durable to withstand the forces of
taking the patient impression."*

Specialities

- Ultra fast printing
- Eliminating stone models
- High Flexural Strength.
- Improves impression accuracy
- Excellent Dimensional Stability
- Compatible with DLP / LCD
- Works with 385 / 405 nm

➤ **Eliminated Phase Separation During Storage / Long Shelf Life**

Mechanical Properties

Property	Procedure	Result
Flexural Strength	ISO 4049	143,03
Elasticity Modulus	ISO 4049	2640,76
Viscosity (m.Pa.s 23 OC)	—	470
Elongation at Break (mm)	ISO 4049	3,41

Colour Alternatives

- Standart Colour: Blue

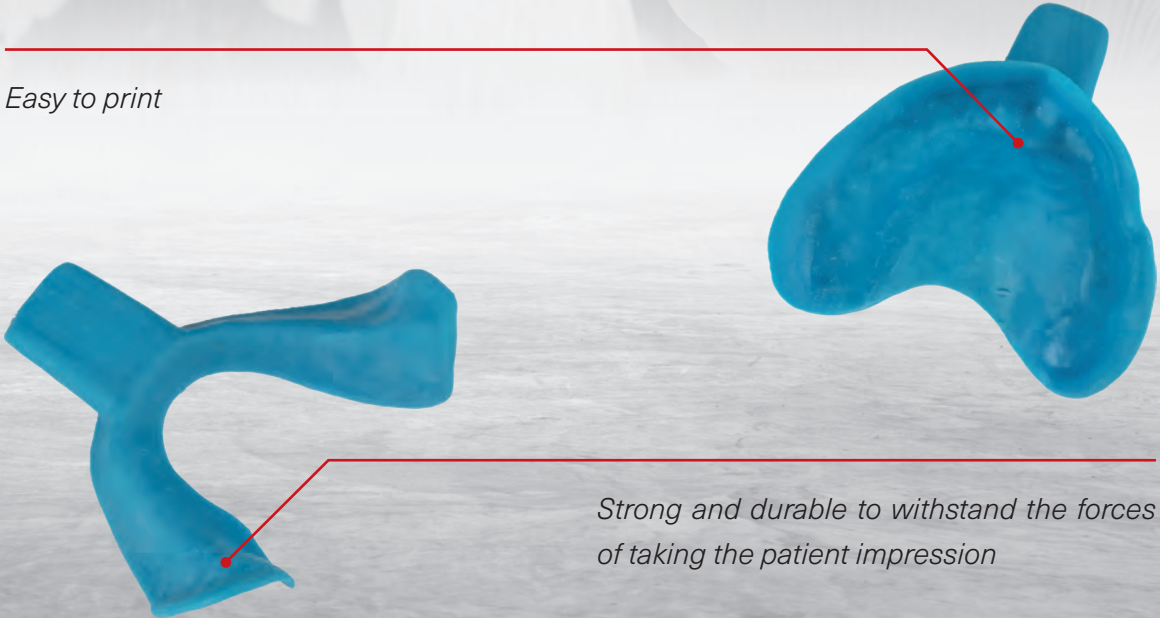
24
MONTHS Shelf Life

**Optimised polymerisation during UV penetration
Controlled Reaction Speed**





Easy to print



Strong and durable to withstand the forces of taking the patient impression

the better way



COST EFFECTIVE HIGH SPEED ACCURATE

COMPATIBLE WITH

ASIGA®

MIICRAFT



SHINING 3D

CREALITY



phrozen

ANYCUBIC



FLASHFORGE



LINIX



ACKURETTA

rapidshape

and the other open system printers





ARMA
DENTAL

ARMA

DENTAL



GOSB Kemal Nehrozoğlu Cad. GOSB Teknoparkı 1. Üretim Binası 3-4-5. Birim
Gebze - Kocaeli - Türkiye 41400

www.armadental.com

info@armadental.com
sinan.gunuc@armadental.com

Phone: +90 262 678 89 85

WP: +90 530 464 53 54